

**GOPCBA 雅鑫达电子**

# One-Stop PCBA Manufacturing Solutions

**HIGH-MIX • FLEXIBLE VOLUME**

**ONE-STOP • TRUSTED**



## Company Profile at a Glance



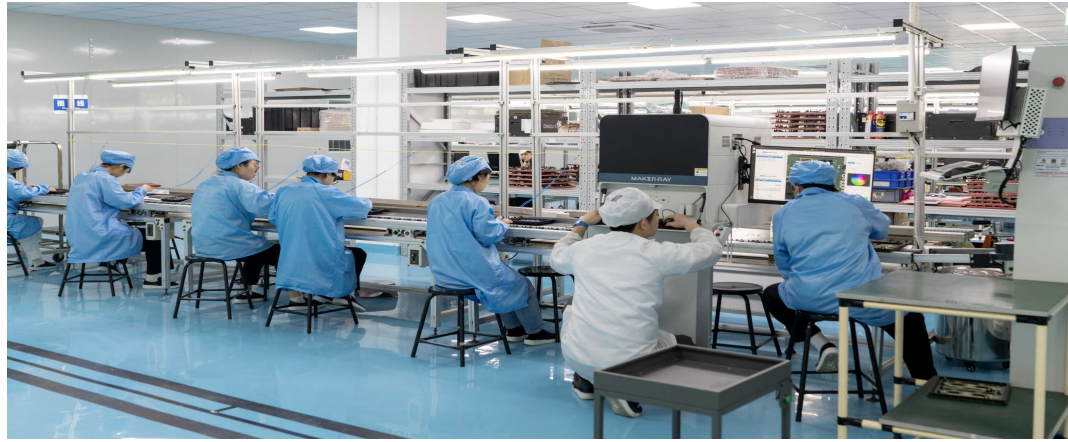
**Manufacturing** Base



Established **2013**



**YAMAHA** High-Speed SMT



**200+** Employees

# Your Trusted EMS Partner

## One-Stop Services

PCB Design & DFMA Analysis



PCB Manufacturing & Components Sourcing



PCB Assembly (SMT) & Finished Product Assembly (Box Build)

20000+ m<sup>2</sup> (Factory Area)

## Key Markets

Medical Electronics

Automotive Electronics

Industrial Control Electronics

Artificial Intelligence (AI)

Communication Electronics

24 Hours (Quickest Delivery)

The GOPCBA Advantage

Efficiency  
**QUICK TURN**

Efficiency

Streamlined Workflow  
Fast Turnaround

Engineering  
**DFM**

Engineering

Design for Manufacturing  
Tech Insights

Quality  
**IATF/ISO**

Quality

Strict adherence to Global  
Standards.

Turnkey  
**TURNKEY**

One-Stop

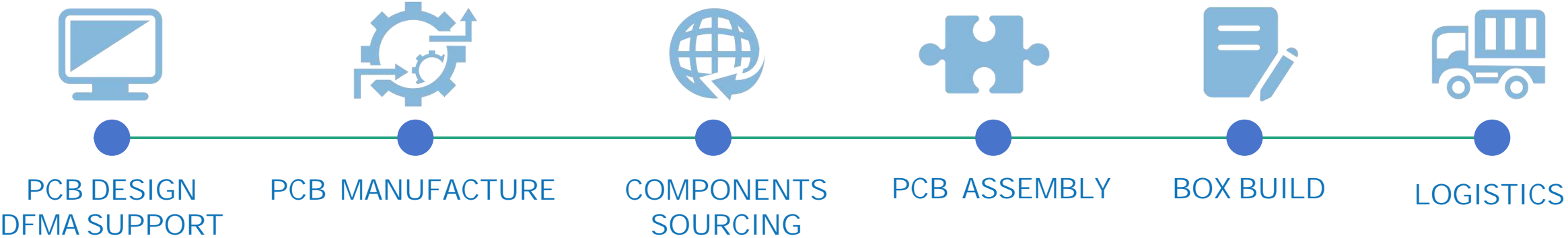
Sourcing + Fab + Assembly



Serving **30+** Countries Worldwide with Engineering Excellence

One-Stop Manufacturing Service

The 6-Step Flow



**From Concept to Delivery — We Handle Complexity, You Focus on Innovation**

## Engineering DFMA Support

- GOPCBA engineers act as your safety shield. By applying rigorous DFMA standards, we eliminate risks across both fabrication and assembly stages



**DFM Check (PCB Fabrication)**

- Line/Space
- Via
- Stack-up



**DFA Check (PCBA Assembly)**  
**DFA分析: SMT组装**

- Footprint
- BOM Match
- Thermal



**OPTIMIZED (Production Ready)**



**30+**  
Engineers

**10+**  
Years Exp

## Global Supply Chain Management



### 100% Original Guarantee

- ✓ Original Manufacturer
- ✓ Authorized Distributor
- ✓ Strict IQC Inspection



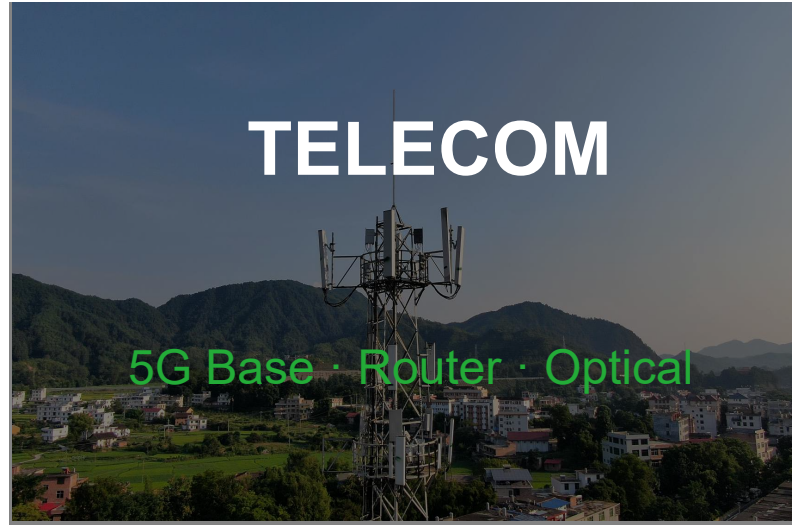
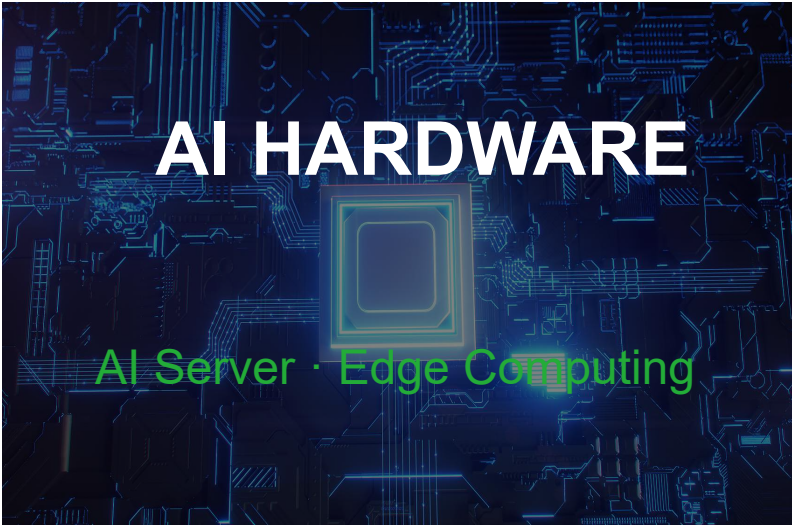
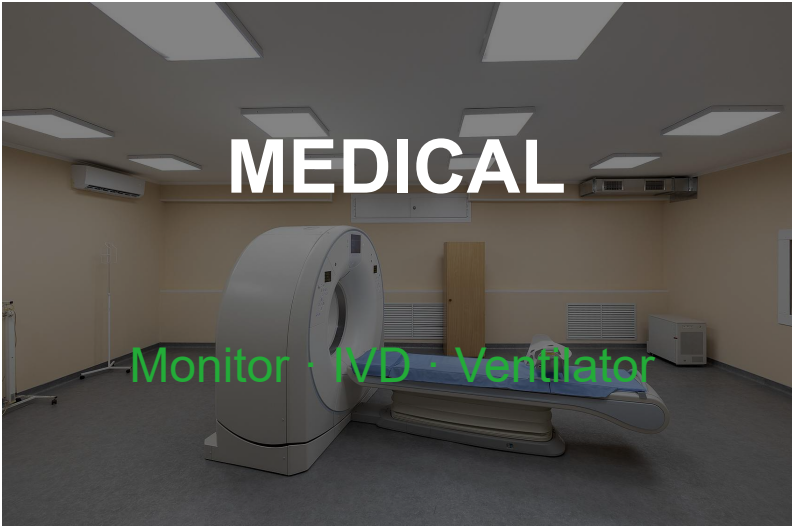
### Global Sourcing Network

- ✓ Global Inventory Search
- ✓ Shortage & EOL Solution
- ✓ Cost Down Strategy

## — STRATEGIC PARTNERS —



**Industries We Empower**



# Precision SMT & Assembly Capabilities

● **Precision**

MIN COMPONENT  
**01005** (Metric)

● **Pitch**

MIN BGA PITCH  
**0.2** mm

● **Quality**

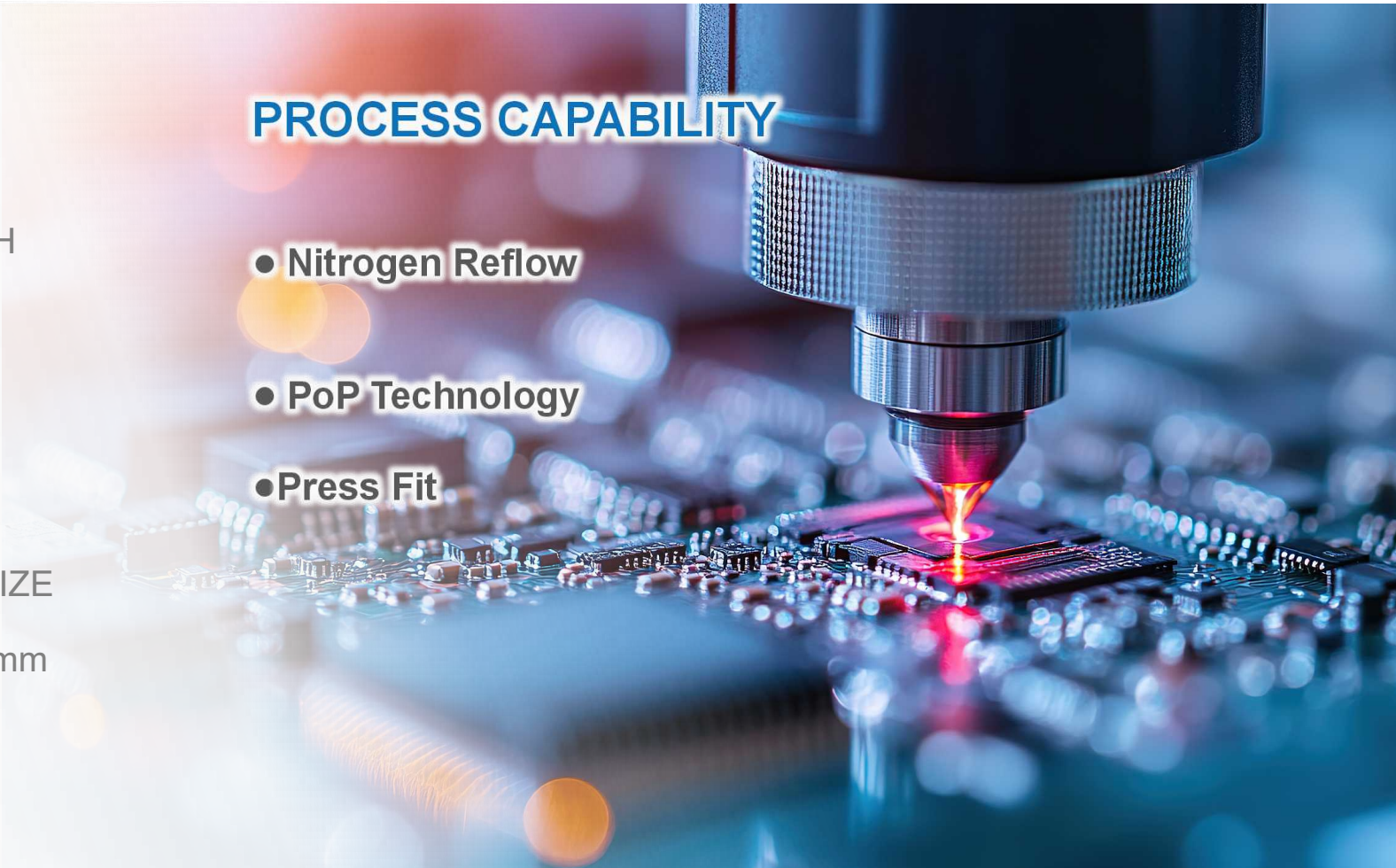
INSPECTION  
**100%** AOI + X-Ray

● **Handling**

MAX BOARD SIZE  
**510x340** mm

## PROCESS CAPABILITY

- Nitrogen Reflow
- PoP Technology
- Press Fit



## Advanced Manufacturing Facilities



X-ray Component Counter



SMT Workshop



SPI Machine



Online dual-line 3D AOI



Smart Shelves



Online 3D SPI GKG-G9



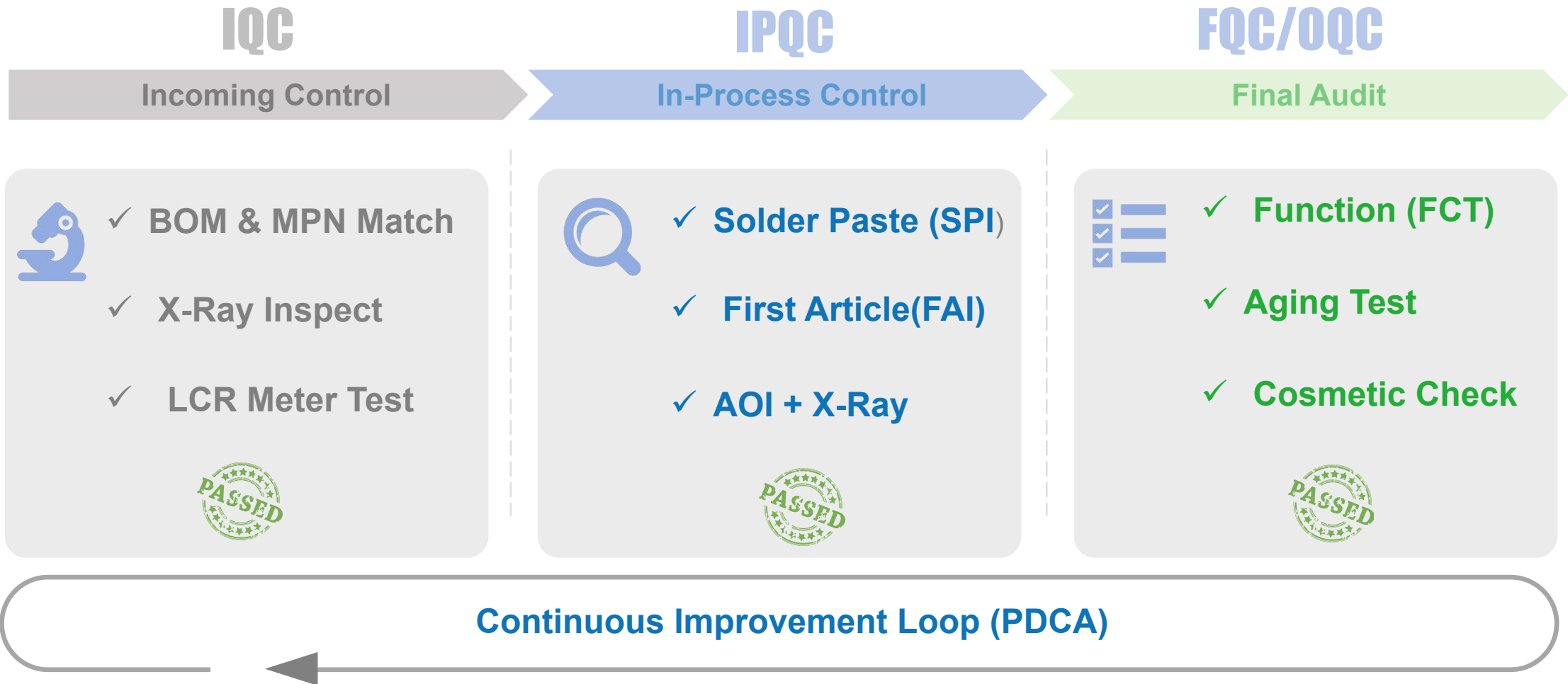
12-Zone Nitrogen Vacuum Reflow Oven



BGA X-ray Inspection

Powered by MES System: Full Process Traceability

# Quality Assurance System



## Certified Excellence & Compliance



Automotive QMS



Medical Devices QMS



General Quality



Product Safety



Environmental

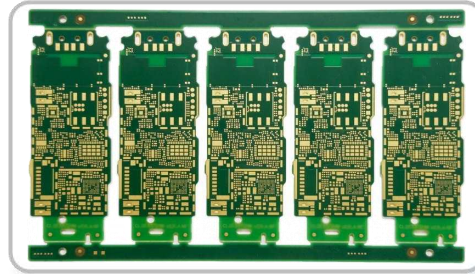


IPC-A-610 Class 2/3

## Success Stories: Precision in Every Detail

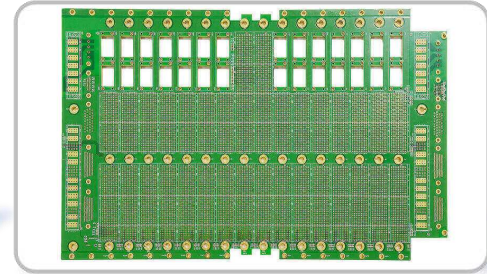
- PCB FABRICATION HIGHLIGHTS**  
High-End PCB Technology

10-layer, 2-step HDI PCB



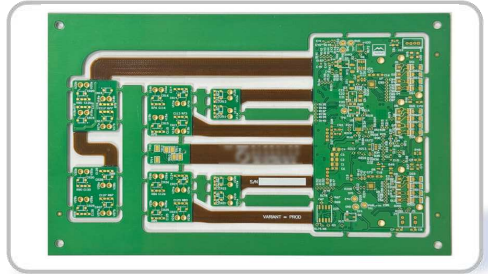
Blind & Buried Vias

60-layer High-Speed Communication Backplane



60 Layers, Board thickness 12 mm

10-layer rigid PCB + 4-layer FPC



Rigid-Flex PCB

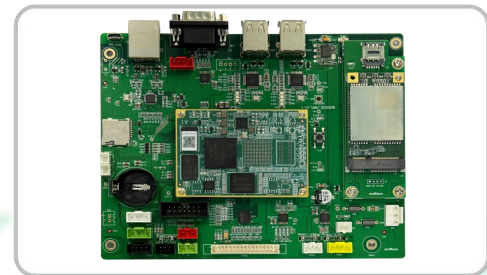
- PCBA APPLICATION SHOWCASE**  
Advanced PCBA Solutions

AI Mainboard



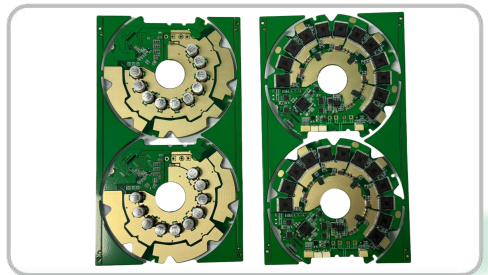
High Computing Power

Medical Device PCBA



High Reliability

Humanoid Robot PCBA

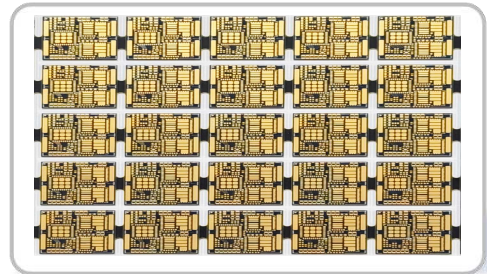


High Density

## Success Stories: Precision in Every Detail

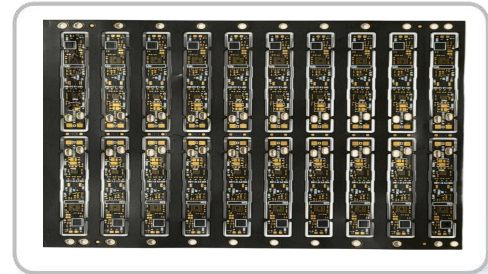
- Precision & High Density

Semiconductor Test PCB



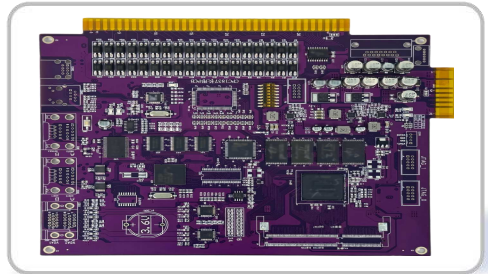
Hard Gold Wire Bonding

BGA ENIG Flexible PCB



BGA Assembly Flex Technology

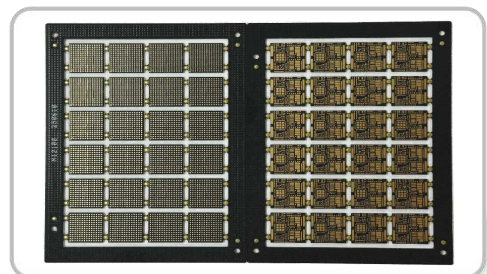
Premium Consumer Electronics Mainboard



HDI Technology Complex Layout

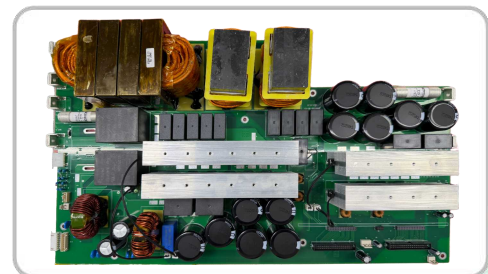
- Power & System Integration

ATE Load Board



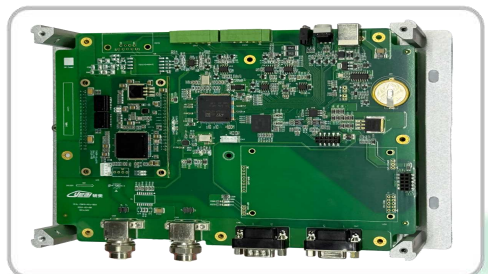
High Layer Count High Speed

Extra-large Automotive Battery Test Pack PCBA




Heavy Copper Thermal Design

Rail Transit PCBA



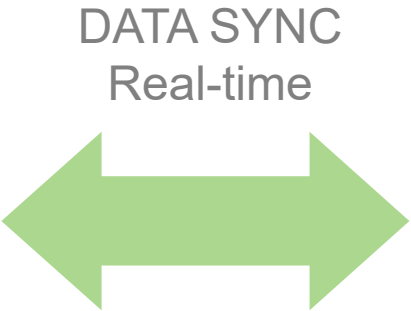
Box Build Modular Design


## Digital Traceability & Transparency

  
**ERP SYSTEM**

---

- Order management
- Supply chain management



  
**MES SYSTEM**

---

- Shop floor
- Machine IoT



RAW MATERIAL  
Batch No. / Date Code



SMT PROCESS  
Machine ID / Temp

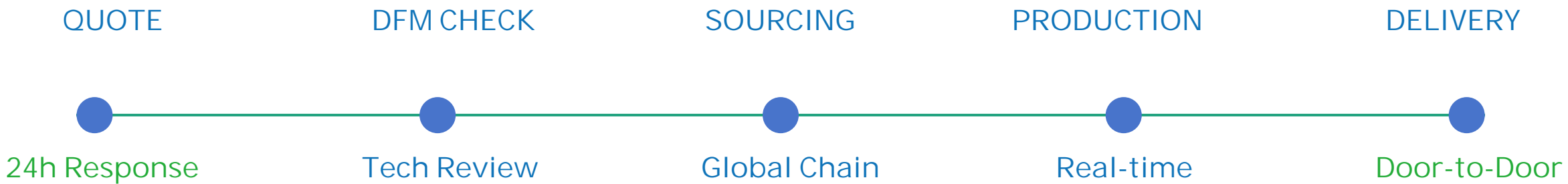


QUALITY CHECK  
SPI / AOI / PASS

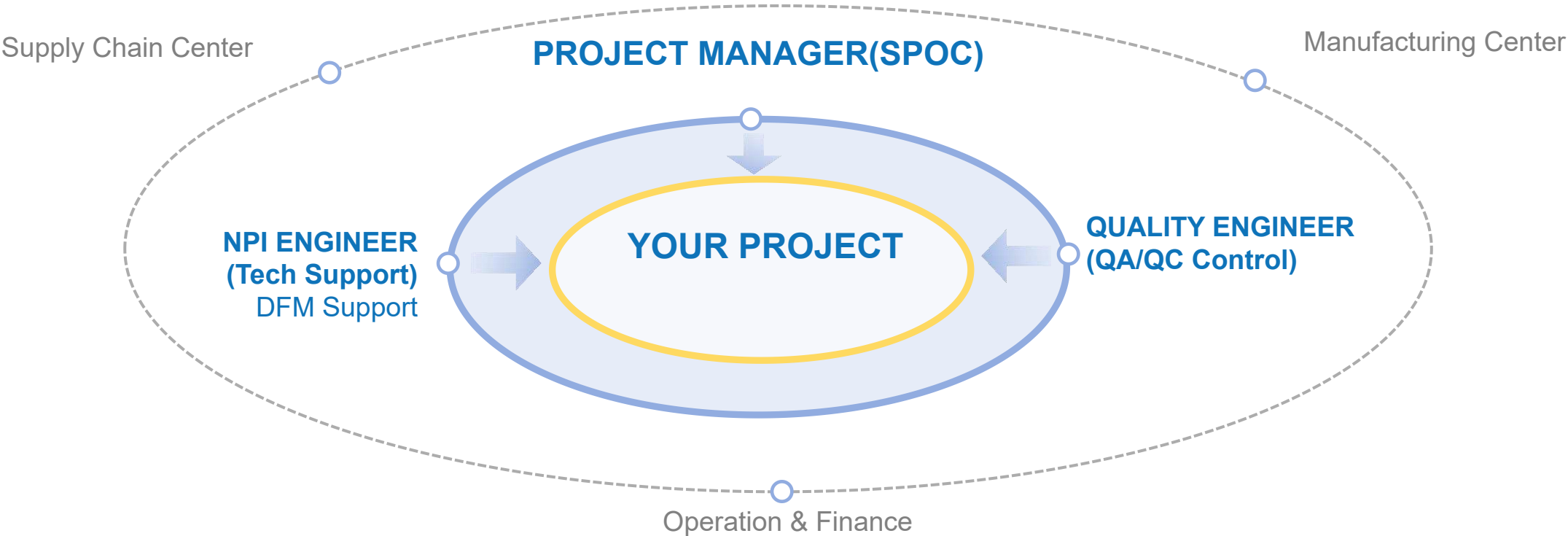


SHIPPING  
Tracking No.

# Seamless Project Management



# Project-Oriented Team Structure



<b>PM</b> Schedule & Communication	<b>NPI</b> DFM & Engineering	<b>QE</b> ISO Standard & Quality Control
---------------------------------------	---------------------------------	---

**Executive Oversight: General Manager ensures resource allocation**

Ready to start your project?



**GET A QUOTE IN 24 HOURS**



EMAIL

**sales@gopcba.com**



PHONE/WHATSAPP

+86 **18123769076**



OFFICIAL

**www.gopcba.com**



Address:

**Global Manufacturing HQ  
Building 11, 3rd Ind. Zone, Houting, Shajing, Bao'an, Shenzhen**

